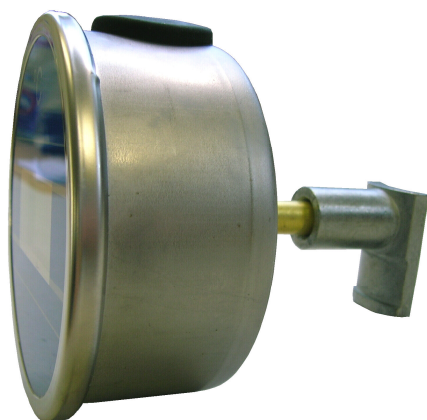


**Digital temperature indicator with surface tube attachment base**  
and network-independent battery supply

9705

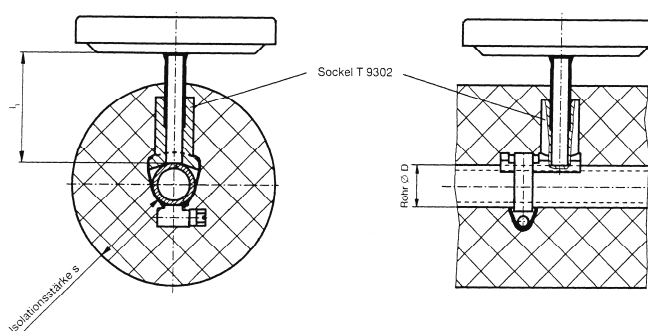


Article-No. 92572-1xxx

**Technical Data**

<b>Function</b>	: permanent temperature indication
<b>Measuring range</b>	: 0,0 to +100,0 °C
<b>Resolution</b>	: 0,1 °C
<b>Measuring cycle</b>	: 2 sec.
<b>LCD-Display</b>	: 18 mm high
<b>Casing</b>	: beaded casing, 100 mm Ø, stainless steel
<b>Protection type</b>	: waterproof IP 65
<b>Connection</b>	: centric rearwards
<b>Connection type</b>	: smooth feeler 66 mm x 8 mm Ø brass, with surface tube attachment base
<b>Auxiliary energy</b>	: micro torch battery 1,5 V
<b>Battery change</b>	: by user, symbolic indication
<b>Battery shelf life</b>	: 3 - 4 years – depending on the environmental conditions
<b>Battery compartment</b>	: to easily change the battery

1. The thermometers support feelers have to be fixated via pipe clamps (not included in delivery).
2. Pipe asperities (e.g. paint drips, weld spots and so on) should be removed, so that a clean Support surface is ensured.
3. To warrant an exact temperature indication, thermally conductive paste should at least be used between pipe and supporting feeler.  
Even better is the use of thermally conductive paste and an appropriate isolation like pictured below.



Installation example

Subject to modifications, even of technical kind. 01/16